

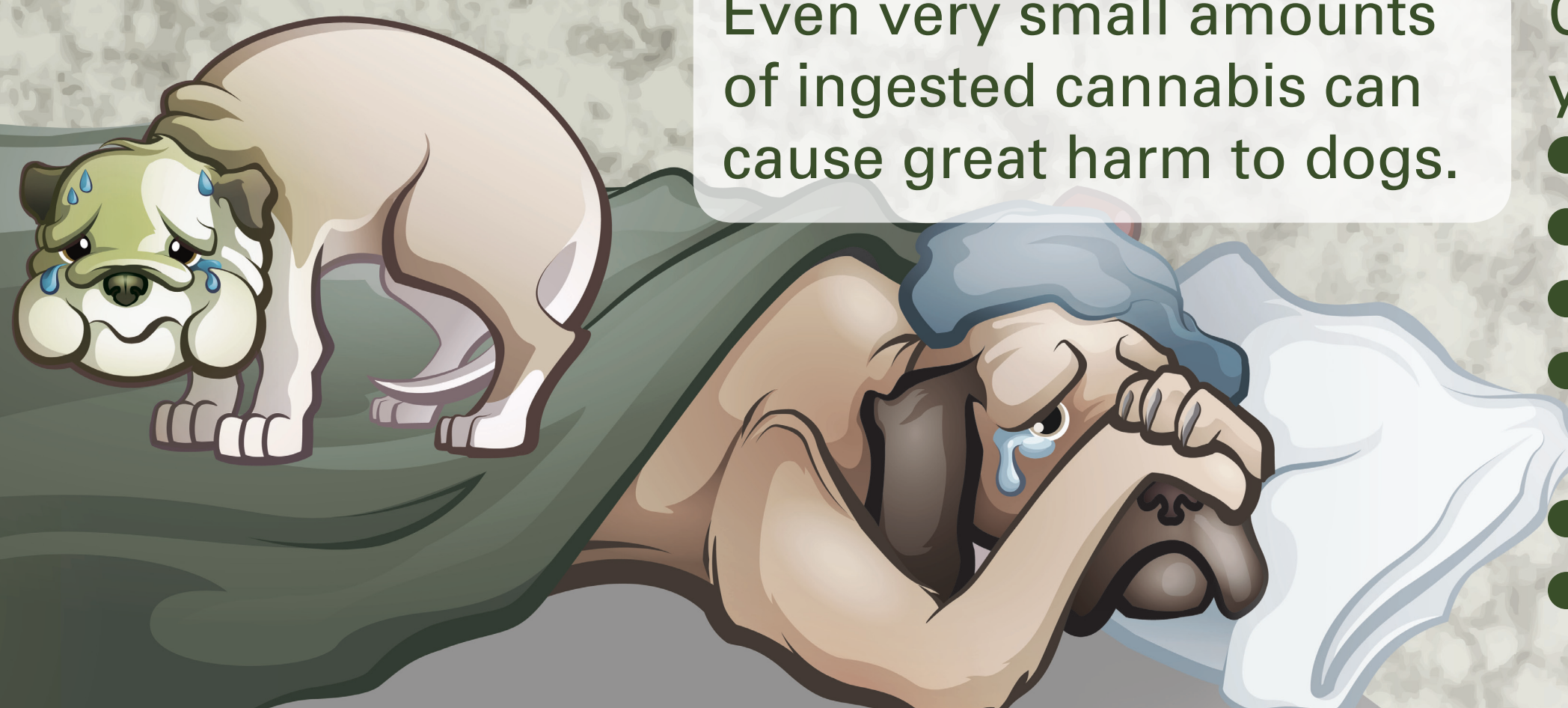
HERE'S SOMETHING TO BARK ABOUT!



With recent legalization of marijuana, neighbourhood pets are suffering from cannabis toxicity in growing numbers!

This is caused by discarded cannabis waste products (roaches/joint butts and edibles) in public parks and on trails.

HOW DOES CANNABIS AFFECT DOGS?



Even very small amounts of ingested cannabis can cause great harm to dogs.

Contact a veterinarian if you see the symptoms:

- Vomiting.
- Depression.
- Urinary incontinence.
- Ataxia (lack of coordination, wobbling or head bobbing).
- Slowed heart rate.
- Some experience agitation and high blood pressure.

WE CAN ALL PROTECT OUR PETS!

Responsible & ethical use of cannabis is something we can all work towards!

- Carry a small container or bag for your roaches.
- In a pinch, pocket your roach.
- Pick up any roaches found.
- Consider using a vape or pipe to produce less waste!
- Share this information with friends, family & dispensaries.

“Thank You, Friends!”

